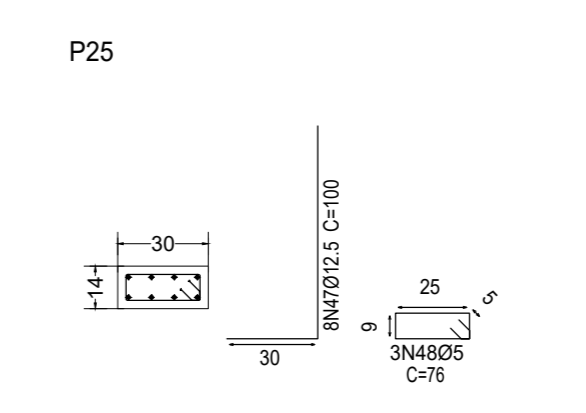
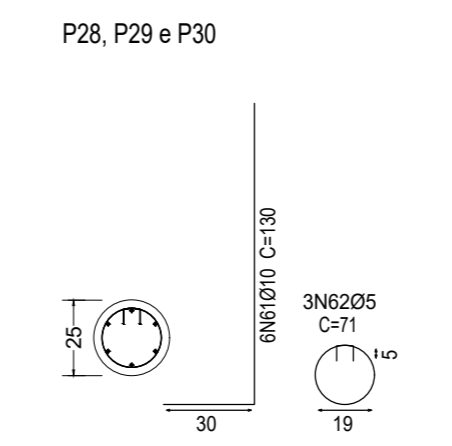
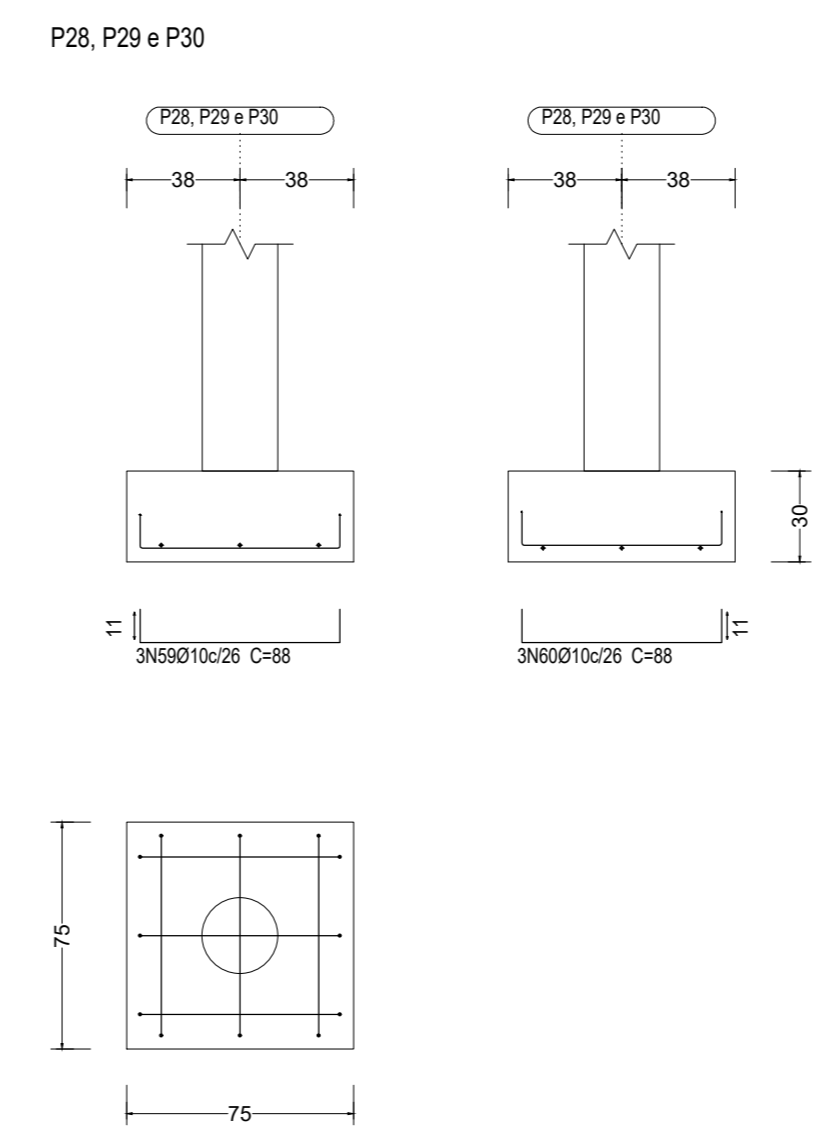
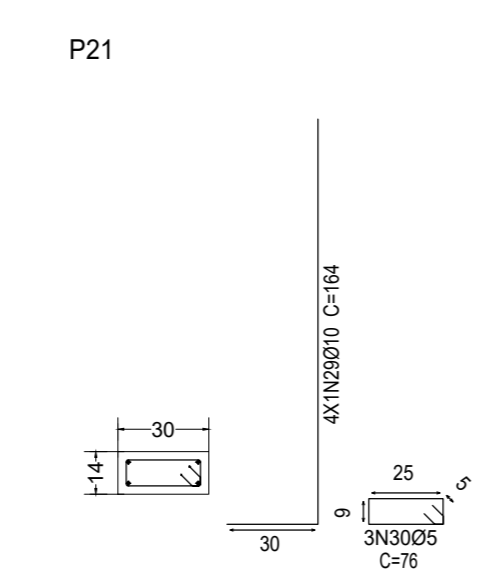
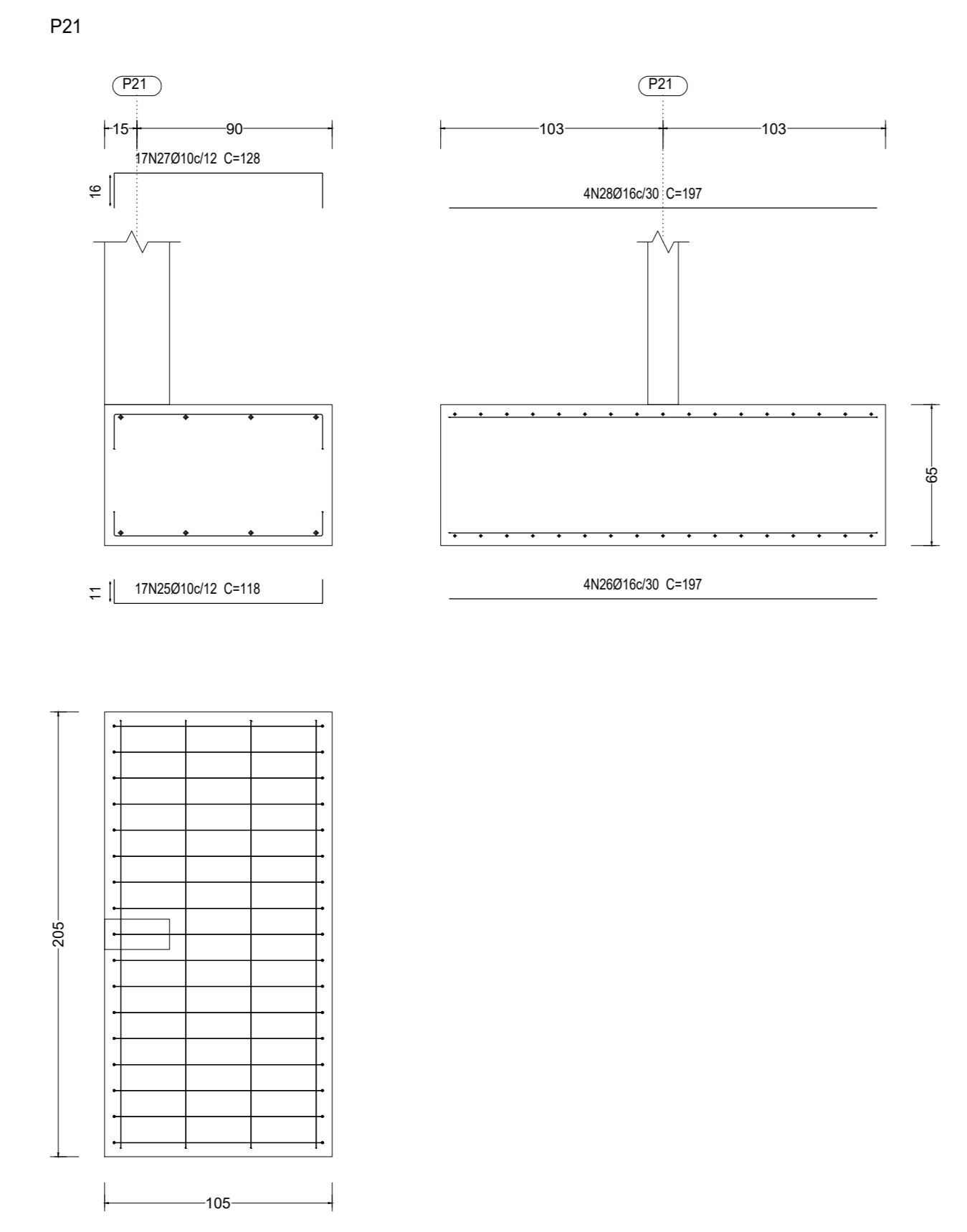
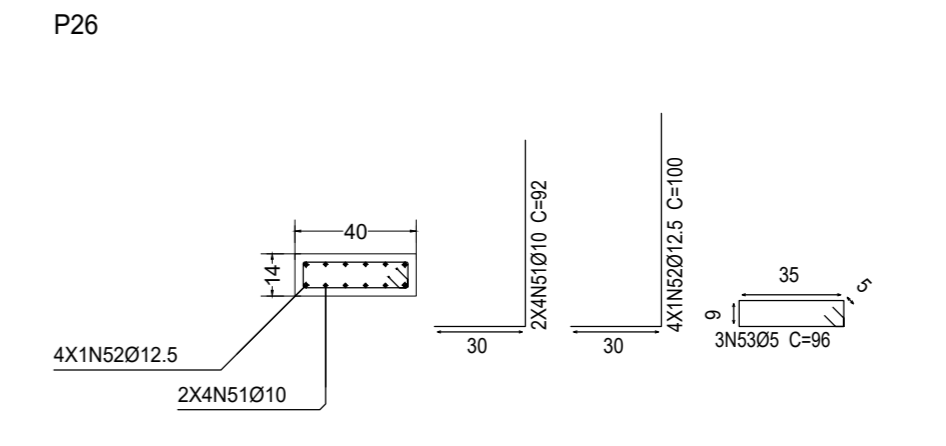
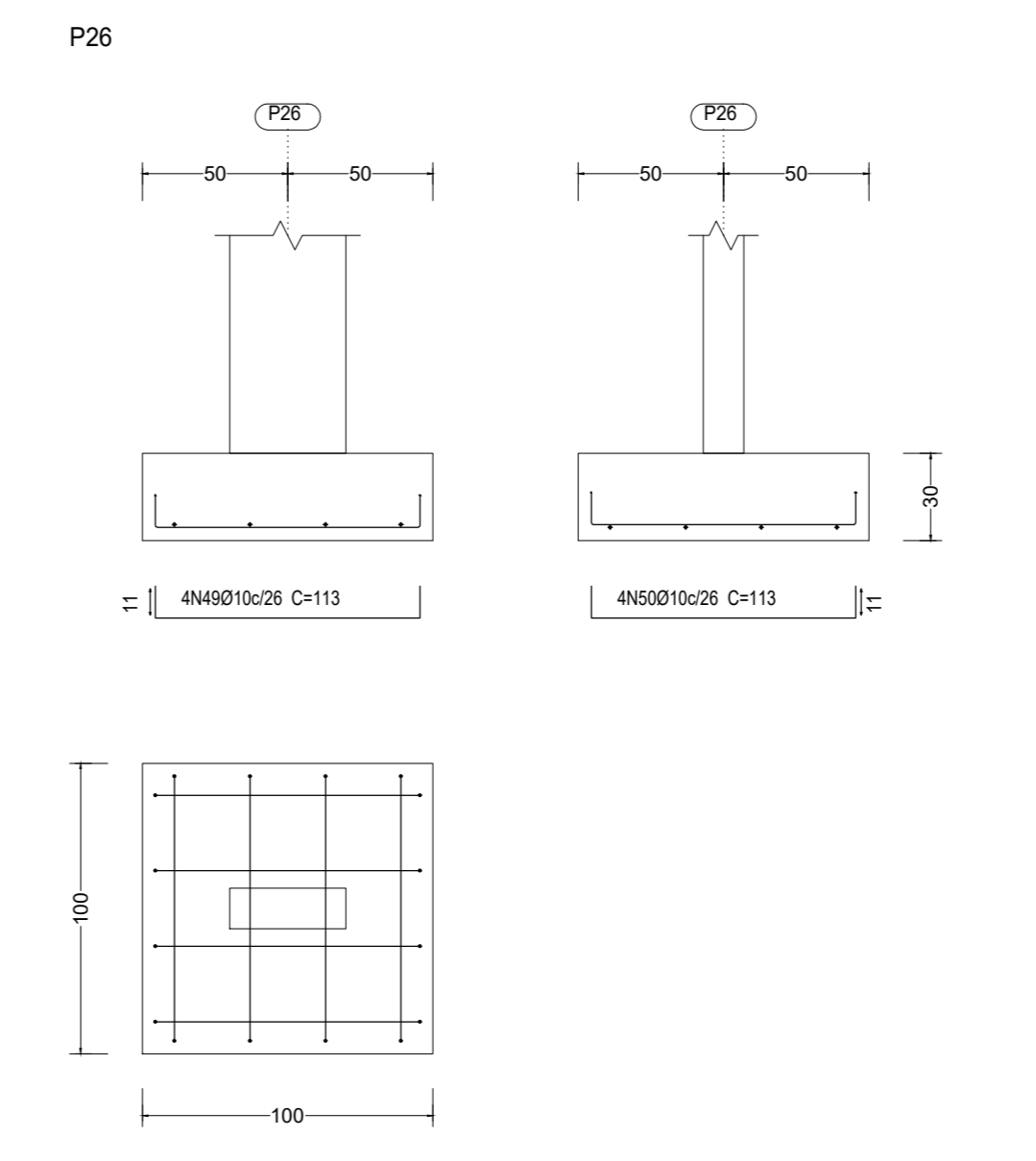
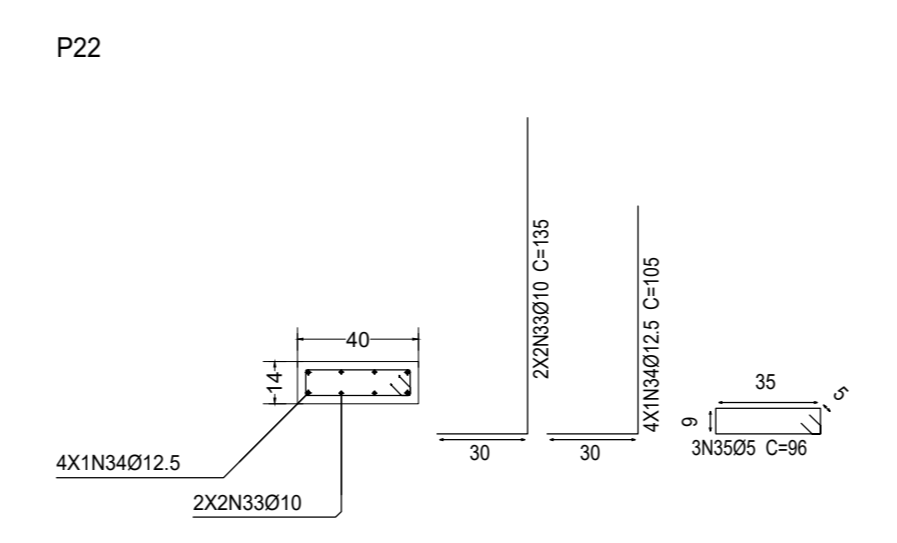
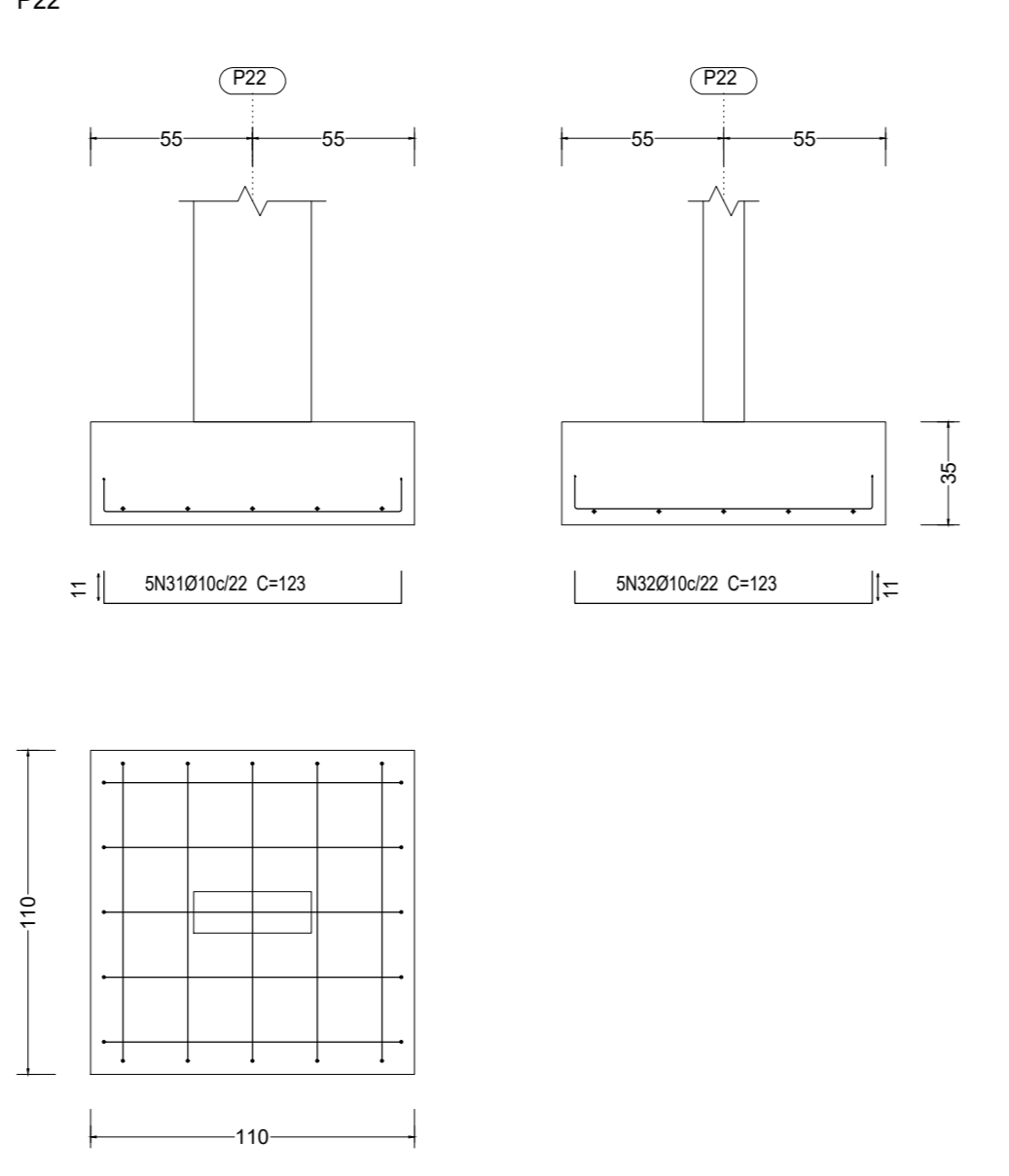
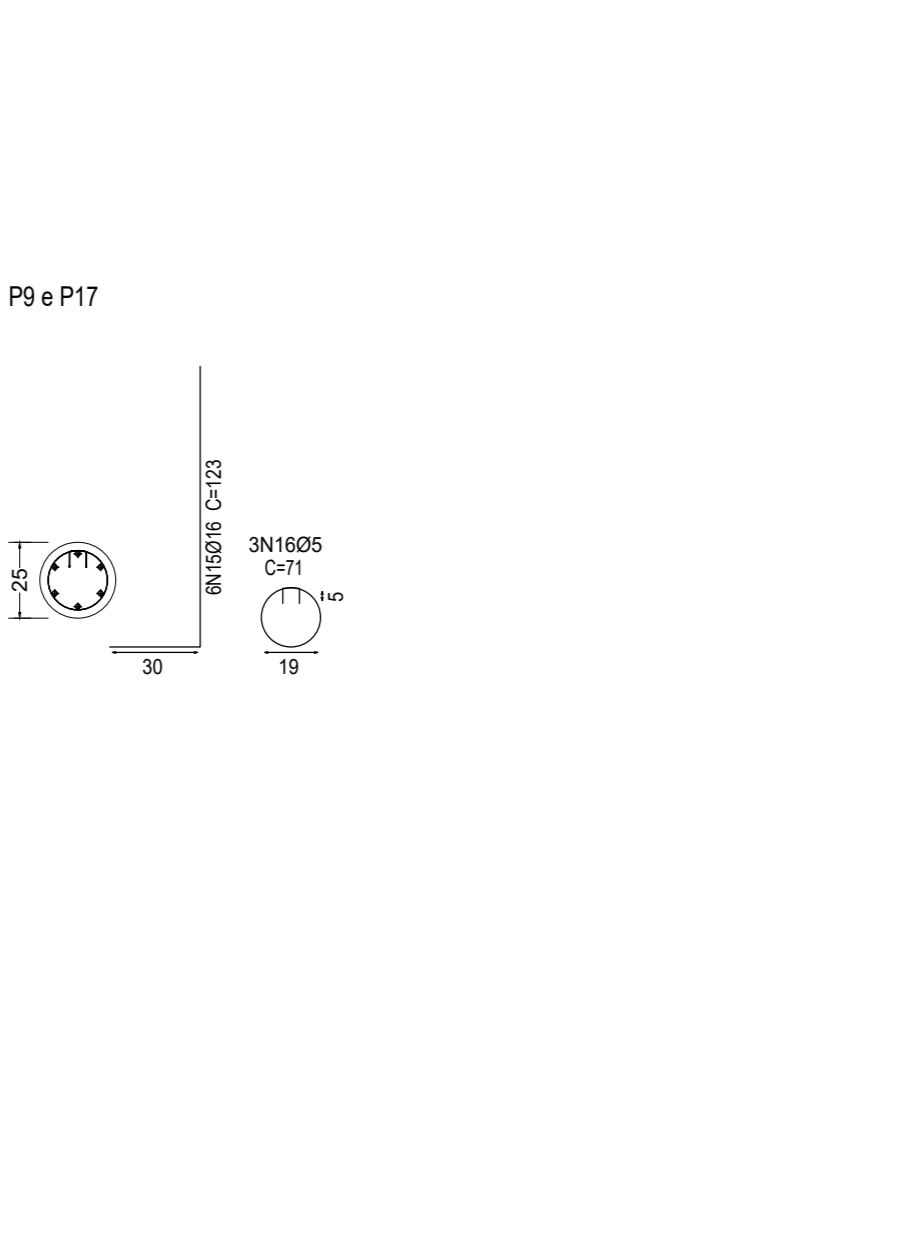
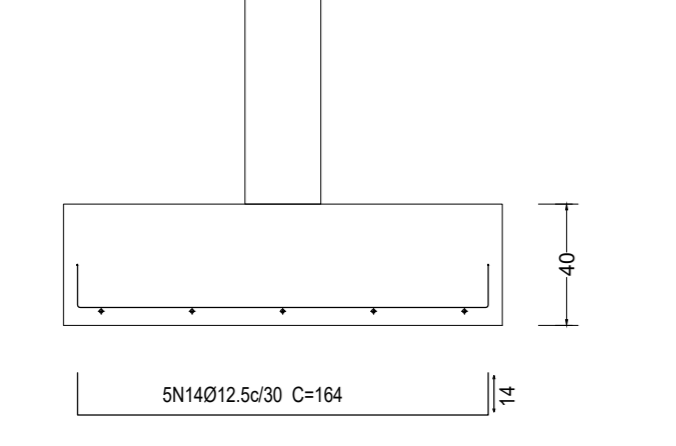
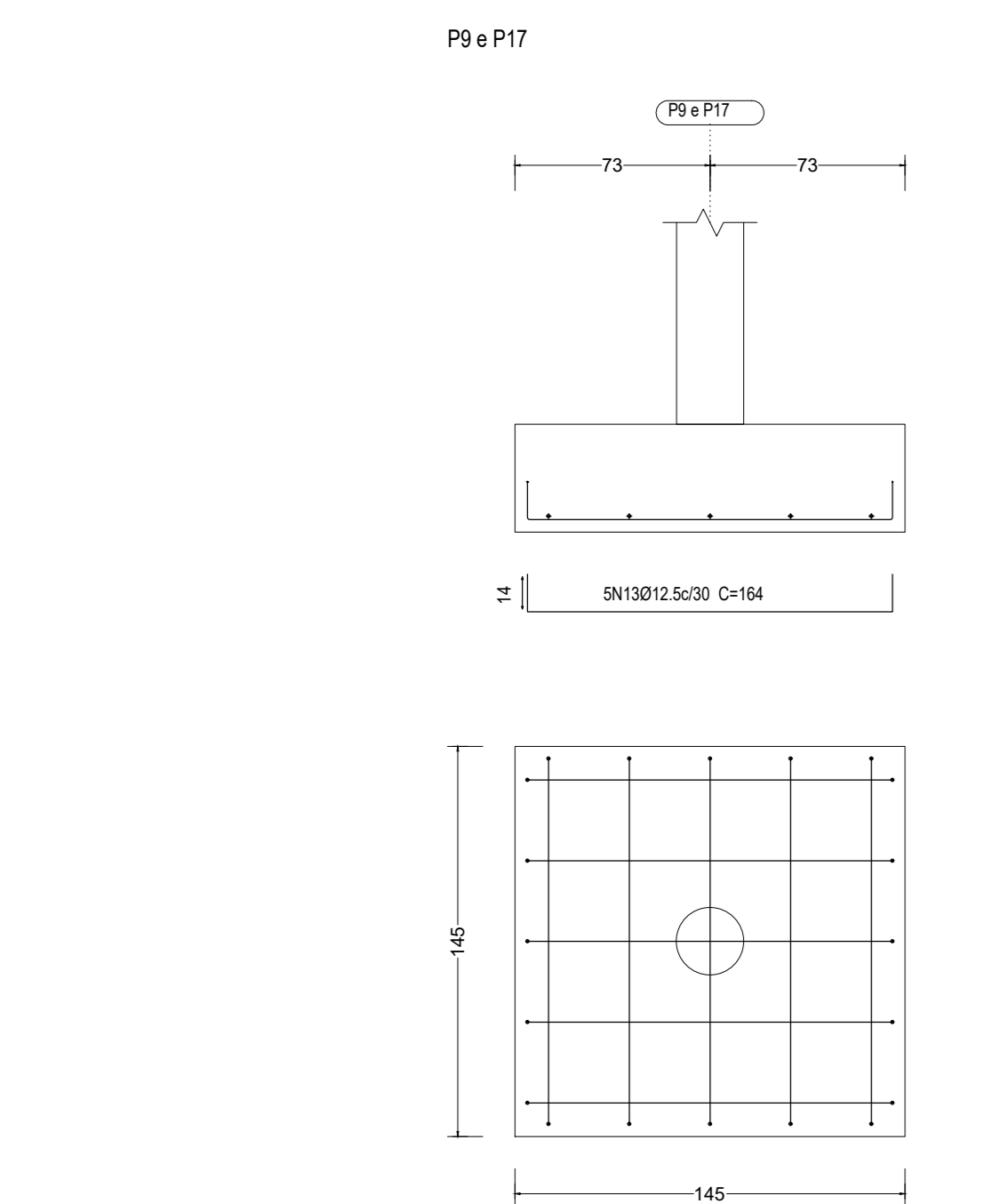
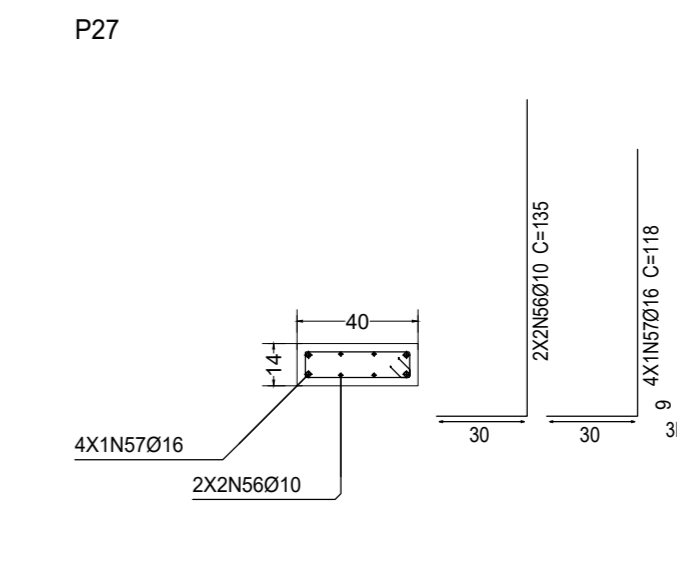
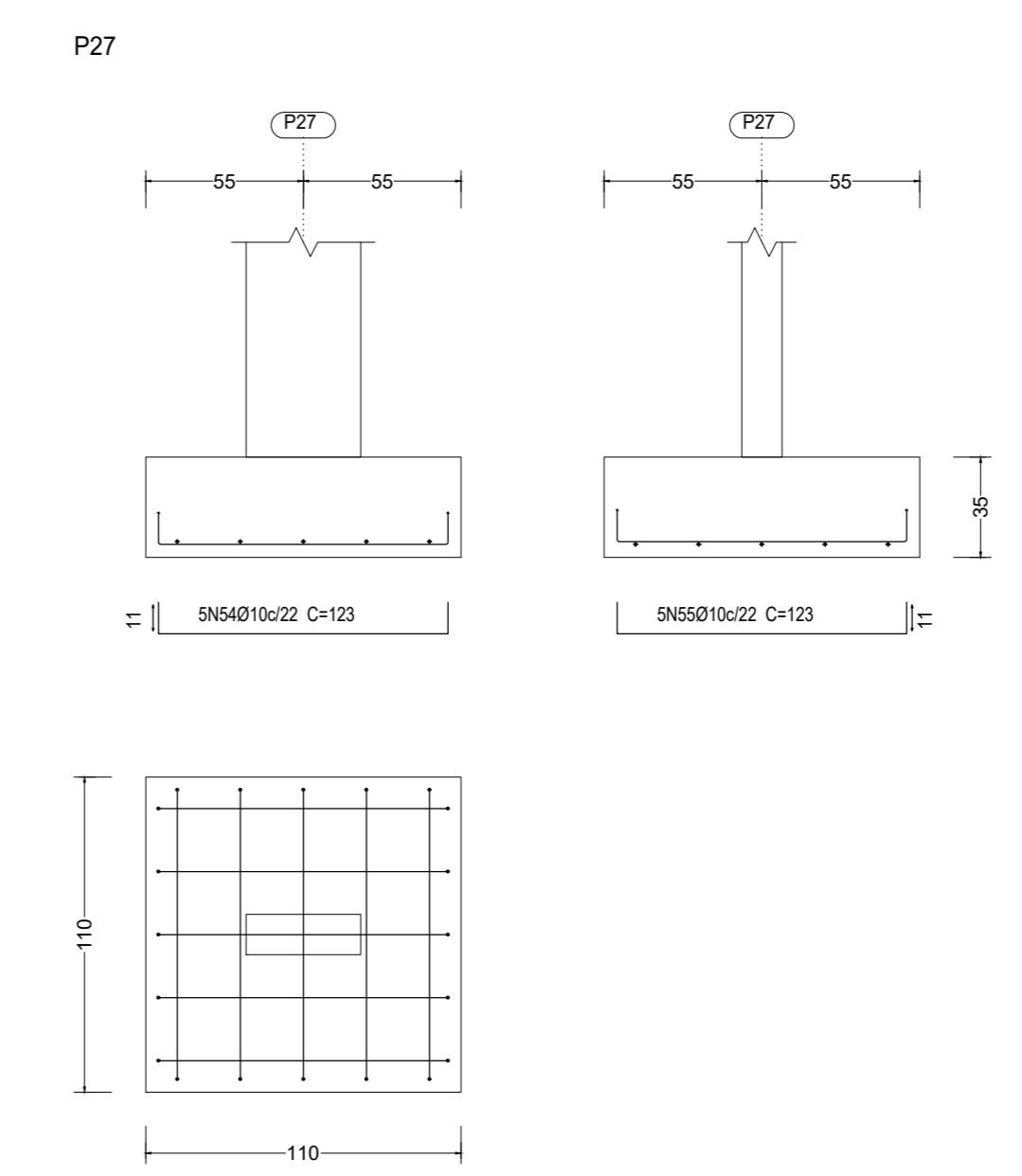
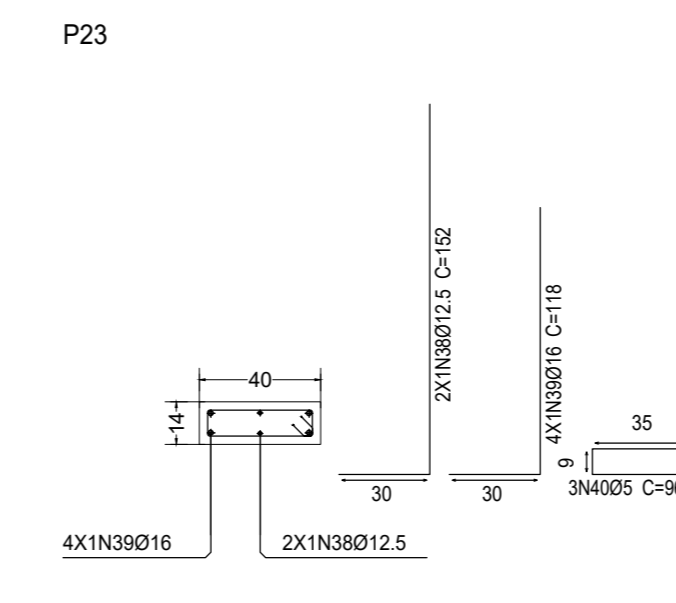
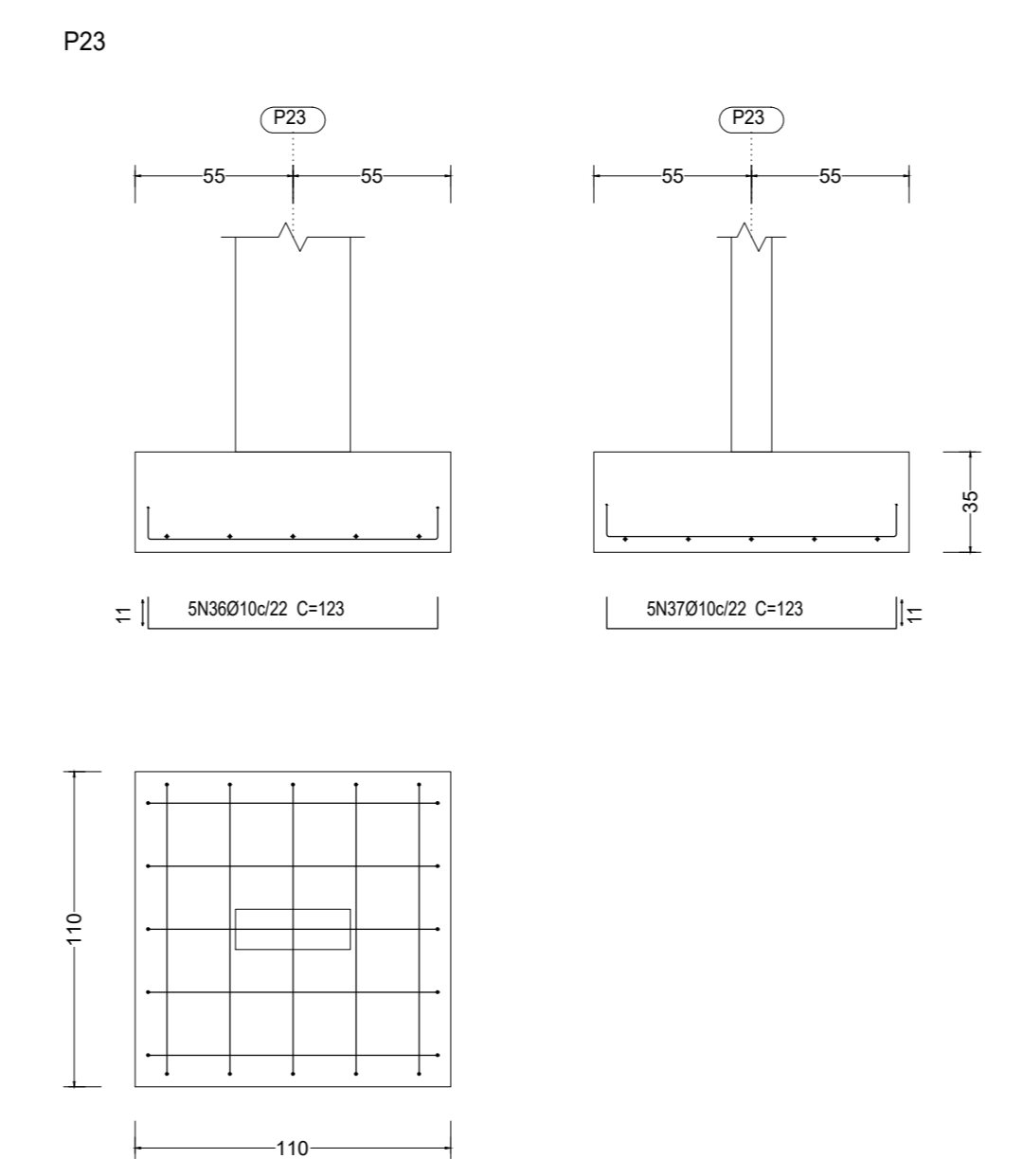
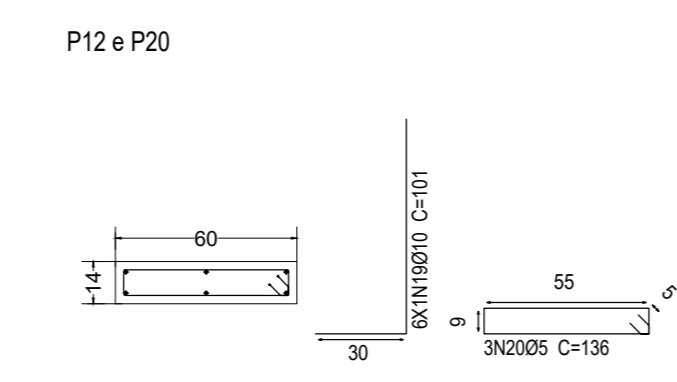
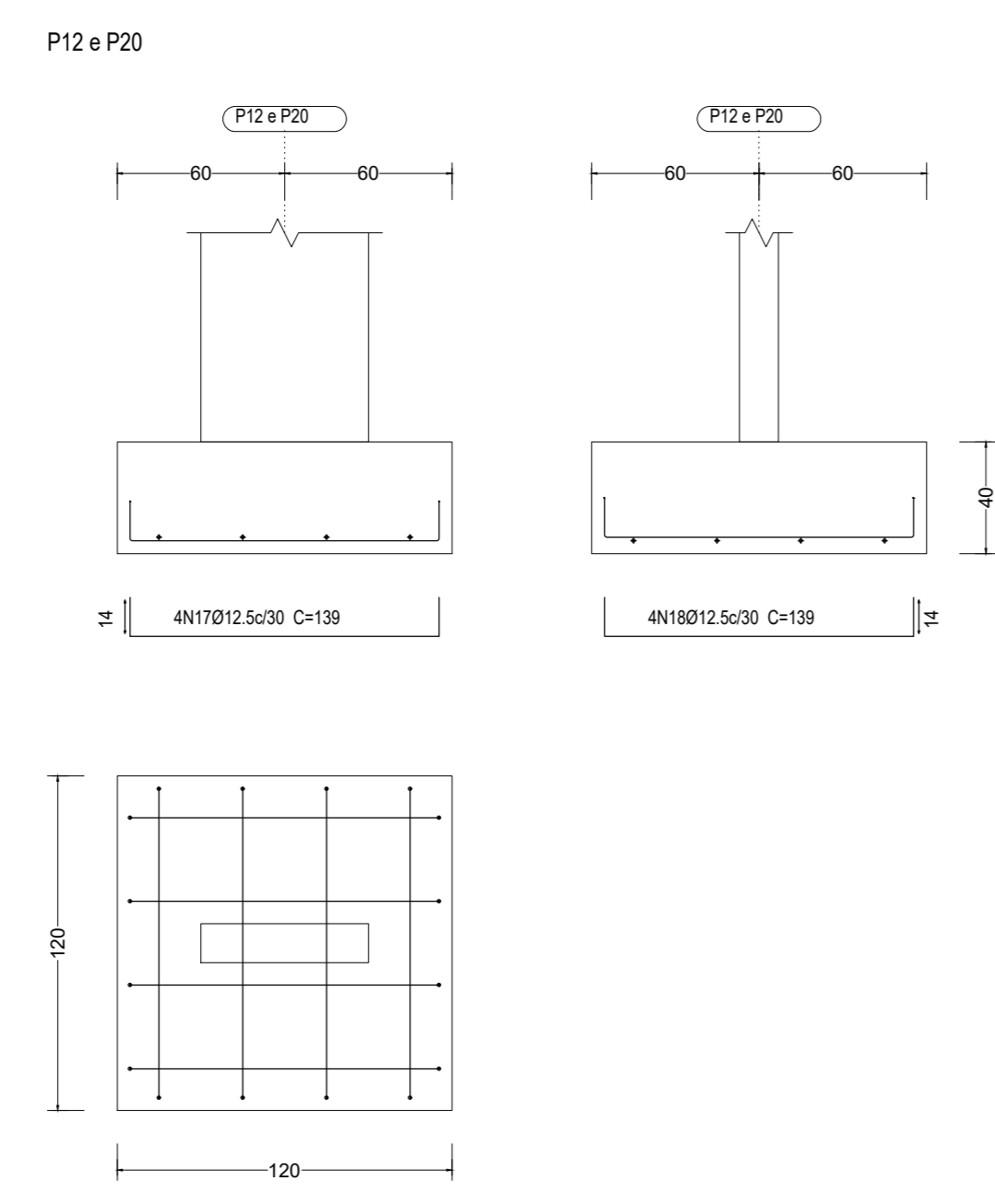
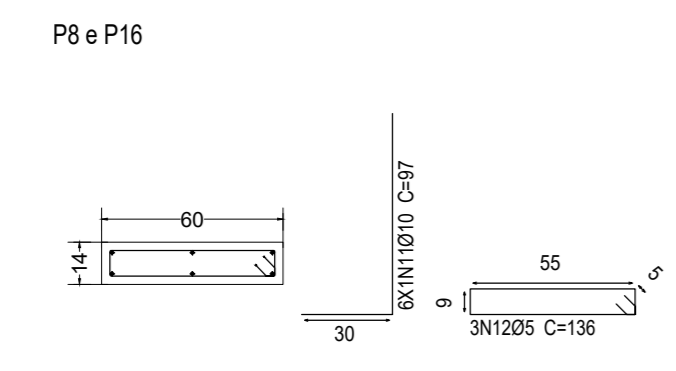
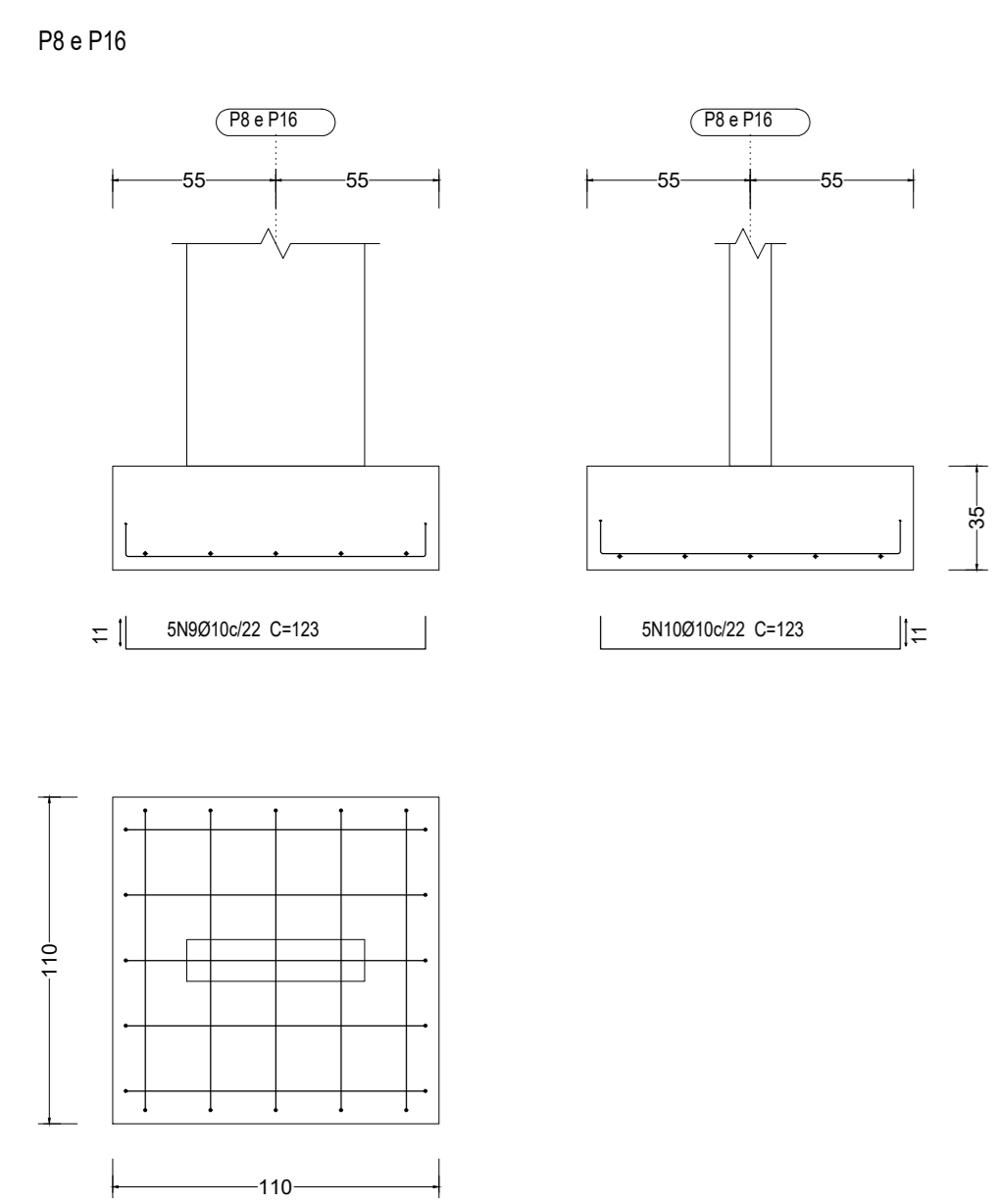


Resumo Aço Fundação	Comp. total (m)	Peso (kg)	Total
CA-50 Ø10	364.6	225	
Ø12.5	235.1	226	
Ø16	54.7	86	537
CA-60 Ø5	78.0	12	12
Total			549



Elemento	Pos.	Diam.	Q.	Do.	Re.	Do.	Comp.	Total	CA-50	CA-60
		(cm)	(cm)	(cm)	(cm)	(cm)	(cm)	(cm)	(kg)	(kg)
P6	1	Ø10	5	11	106	11	128	660	3.9	
	2	Ø12.5	5	11	106	11	128	660	3.9	
	3	Ø10	6	30	100	130	780	4.8		
	4	Ø5	3		71	71	213		0.3	
Total									12.6	0.3
P7,P11,P13,P15	5	Ø12.5	5	14	126	14	154	770	7.4	
	6	Ø12.5	5	14	126	14	154	770	7.4	
	7	Ø12.5	6	30	80	80	800	8.5		
	8	Ø5	3		71	71	213		0.3	
Total									23.3	1.2
P8,P16	9	Ø10	5	11	101	11	123	615	3.8	
	10	Ø10	5	11	101	11	123	615	3.8	
	11	Ø10	6	30	97	97	562	3.6		
	12	Ø5	3		76	76	228		0.6	
Total									11.2	0.6
P9,P17	13	Ø12.5	5	14	136	14	164	820	7.9	
	14	Ø12.5	5	14	136	14	164	820	7.9	
	15	Ø16	6	30	93	93	738	11.7		
	16	Ø5	3		71	71	213		0.3	
Total									27.3	0.9
P12,P20	17	Ø12.5	4	14	111	14	139	556	5.4	
	18	Ø12.5	4	14	111	14	139	556	5.4	
	19	Ø10	6	30	71	101	606	3.7		
	20	Ø5	3		136	136	408		0.8	
Total									14.5	0.8
P18,P19	21	Ø12.5	5	14	126	14	154	770	7.4	
	22	Ø12.5	5	14	126	14	154	770	7.4	
	23	Ø16	6	30	93	123	738	11.7		
	24	Ø5	3		71	71	213		0.3	
Total									26.5	0.3
P21	25	Ø10	17	11	96	11	118	592	12.4	
	26	Ø16	4		197	16	197	788	12.4	
	27	Ø10	17	16	96	16	120	584	12.4	
	28	Ø16	4		197	16	197	788	12.4	
29	Ø10	4		134	164	606	4.0			
30	Ø5	3		76	76	228		0.4		
Total									54.6	0.4
P22	31	Ø10	5	11	101	11	123	615	3.8	
	32	Ø10	5	11	101	11	123	615	3.8	
	33	Ø10	4	30	105	135	540	3.3		
	34	Ø12.5	4	30	75	100	420	4.0		
35	Ø5	3		96	96	288		0.5		
Total									14.0	0.5
P23	36	Ø10	5	11	101	11	123	615	3.8	
	37	Ø10	5	11	101	11	123	615	3.8	
	38	Ø12.5	2	30	122	152	368	2.9		
	39	Ø16	4	30	88	118	472	7.5		
40	Ø5	3		96	96	288		0.5		
Total									18.0	0.5
P24	41	Ø10	4	11	81	11	103	412	2.5	
	42	Ø10	4	11	81	11	103	412	2.5	
	43	Ø12.5	8	30	70	70	500	8.0		
	44	Ø5	3		76	76	228		0.4	
Total									12.2	0.4
P25	45	Ø10	4	11	71	11	90	372	2.3	
	46	Ø10	4	11	71	11	90	372	2.3	
	47	Ø12.5	8	30	70	70	500	8.0		
	48	Ø5	3		76	76	228		0.4	
Total									12.3	0.4
P26	49	Ø10	4	11	91	11	113	452	2.8	
	50	Ø10	4	11	91	11	113	452	2.8	
	51	Ø10	6	30	62	92	786	4.5		
	52	Ø12.5	4	30	70	100	400	3.9		
53	Ø5	3		96	96	288		0.5		
Total									14.0	0.5
P27	54	Ø10	5	11	101	11	123	615	3.8	
	55	Ø10	5	11	101	11	123	615	3.8	
	56	Ø10	4	30	105	135	540	3.3		
	57	Ø16	4	30	88	118	472	7.5		
58	Ø5	3		96	96	288		0.5		
Total									18.4	0.5
P28,P29,P30	59	Ø10	3	11	66	11	88	264	1.6	
	60	Ø10	3	11	66	11	88	264	1.6	
	61	Ø10	6	30	100	130	780	4.8		
	62	Ø5	3		71	71	213		0.3	
Total									8.0	0.3
Total (Ø5)									24.0	0.9
Total (Ø10)									144.8	0.0
Total (Ø12.5)									262.2	0.0
Total (Ø16)									86.6	0.0
Total									433.6	0.2

FUNDAÇÕES

ARCOVERDE - PE

Endereço: Avenida Ovídio Cruz, BR 232, nº 1328, Igará São Miguel

Proprietário: Sessão Judiciária de Pernambuco

Autor do Projeto: Eng.º CML Ugo Cande Brandão - CREA Nº 1.768-DR

Responsável Técnico:

Proprietário: _____

Autor do Projeto: _____ CREA Nº 1.768-DR

A.T. CREA Nº: _____

FUNDAÇÕES EM SAPATAS

ESTACIONAMENTO COBERTO

FUNDAÇÕES - DIMENSÕES E ARMADURAS

EPD

ESTR.

Data: Março/2023

Desenhista: Liane

Escala: 1:50